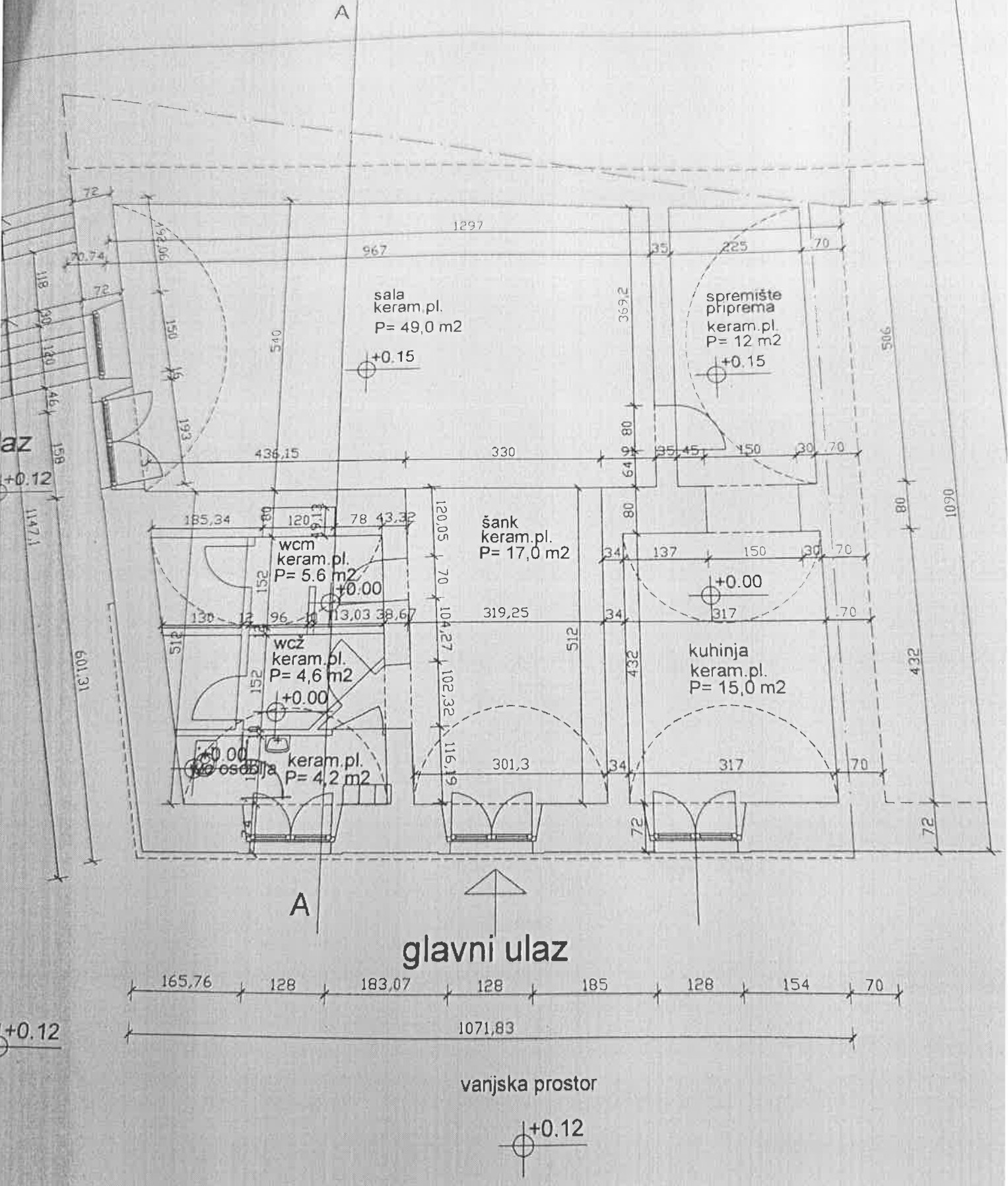
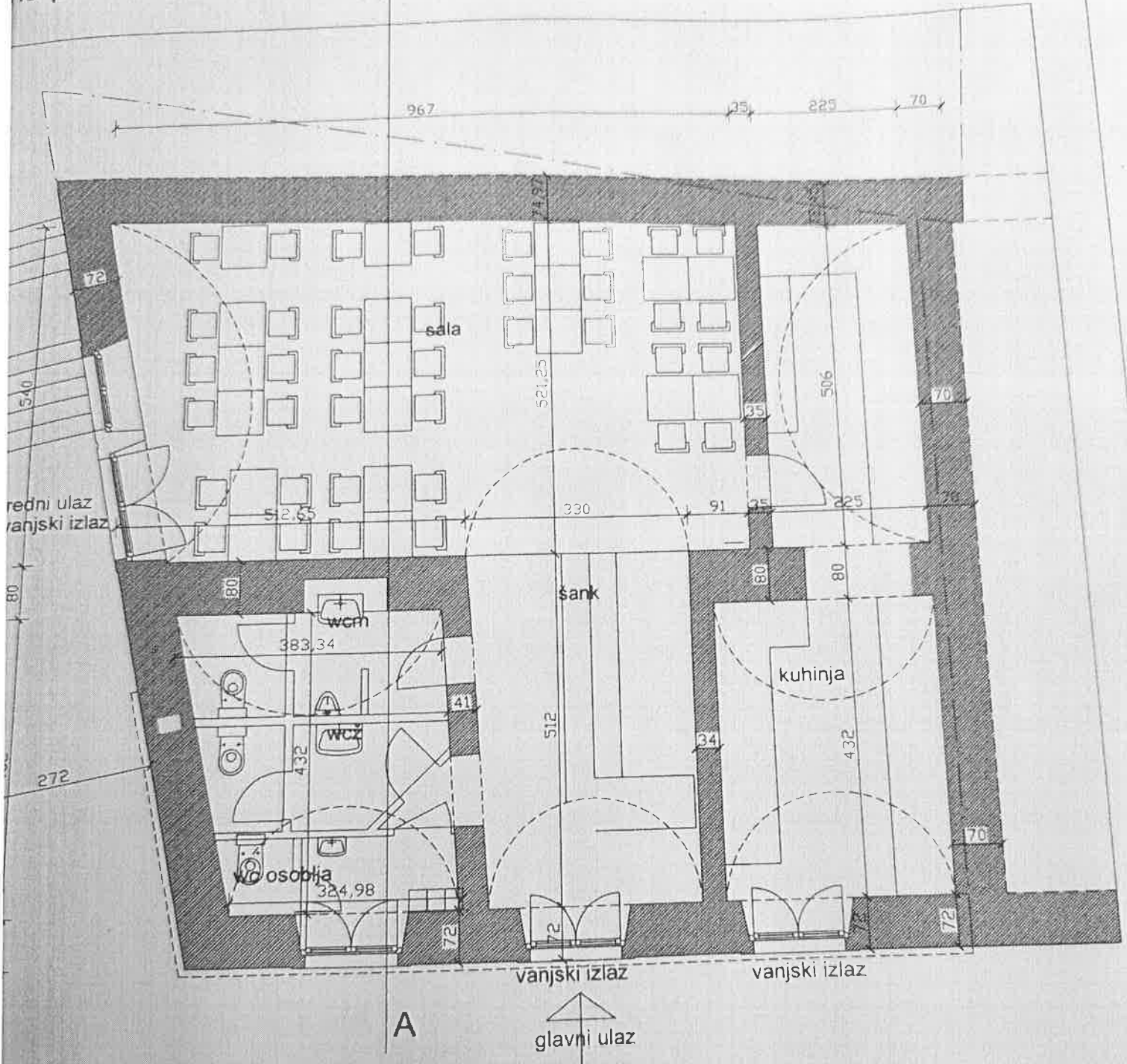


OCRT PRIZEMLJA - KONOBE mj 1 : 100



CRT PRIZEMLJA - KONOBE 1:100
 na postojeće konstrukcije

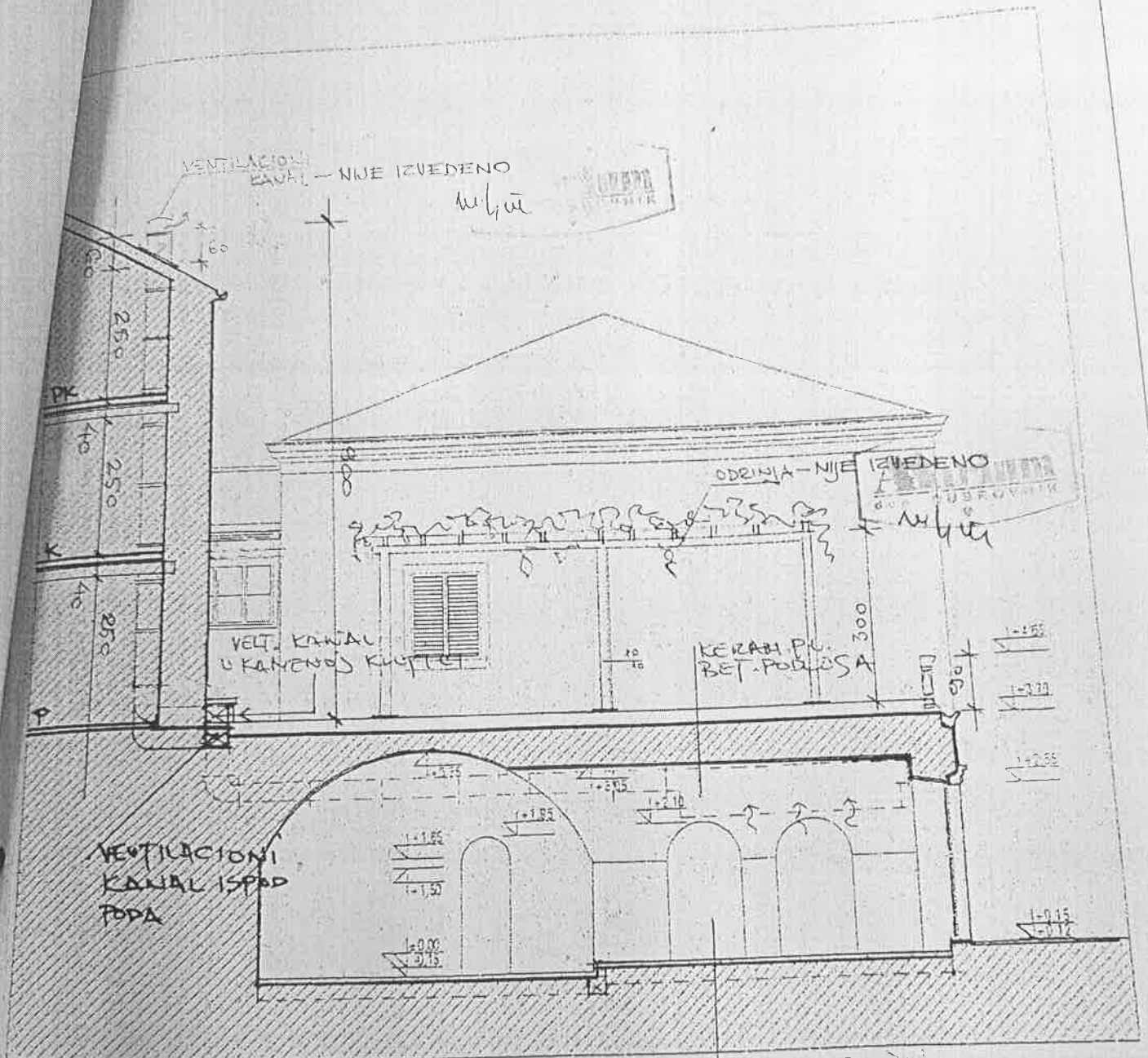


postojeći stari nosivi kamni zidovi

lagani novi pregradni zidovi

postojeći masivni stropni v

ESJEK A - A




KERAN. PODICE
BET. PODLOGA

Miroslav Škoda
dipl. ing. arh.

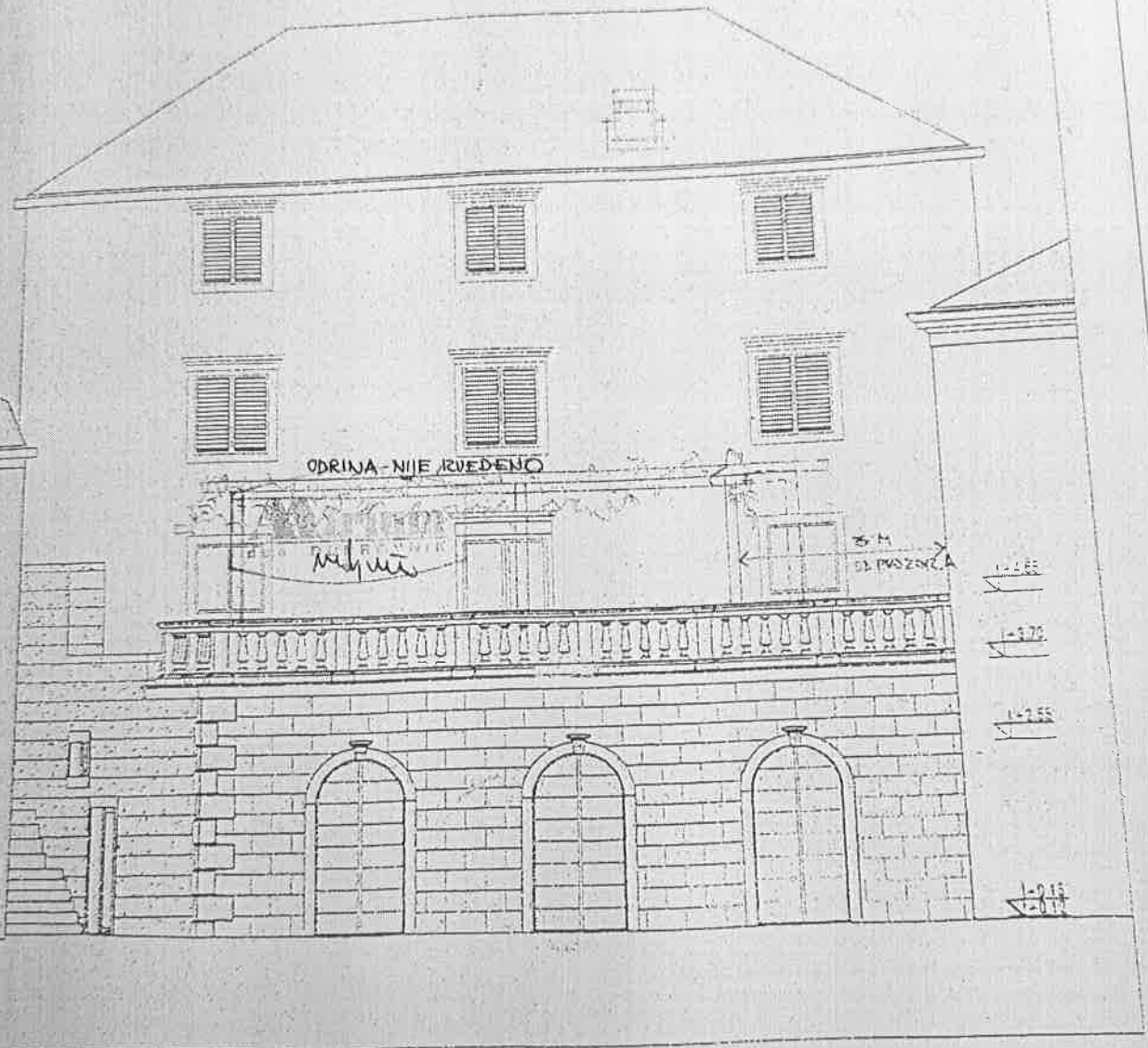
Ovlaštenje arhitekta

ARISTON d.o.o.
Zadar

M.Škoda
A 1463

 PROSTORNO PLANIRANJE ARHITEKTURA INŽENJERING	Investitor	ARISTON d.o.o. Caviat
	Gradivina	konoba
MIROSLAV ŠKODA, dipl.ing. arh.	glavni projektant	faza projekta : ARH. SNIMAK IZV. STANJA
RUŽICA MUHOBERAC, arh.	suradnik	presjek A-A
MIROSLAV ŠKODA, dipl.ing. arh.	direktor	Dat. 4/2010 T.D. 2/10

PADNO PROČELJE




Miroslav Škoda
dipl. ing. arh.

Ovlaštenik projekta

ATR d.o.o.
Zagreb

M. Škoda

A 1463

 PROSTORNO PLANIRANJE ARHITEKTURA INŽENJERING	Investitor	ARISTON d.o.o. Cavtat
	Gradivina	konoba
MIROSLAV ŠKODA, dipl. ing. arh.	glavni projektant	faza projekta: ARH. SNIMAK IZV. STANJA
RUŽICA MUHOBERAC, arh.	suradnik	zapadno pročelje
MIROSLAV ŠKODA, dipl. ing. arh.	direktor	MJ 1:100
		Dat. 4/2010 T.D. 2/10 List