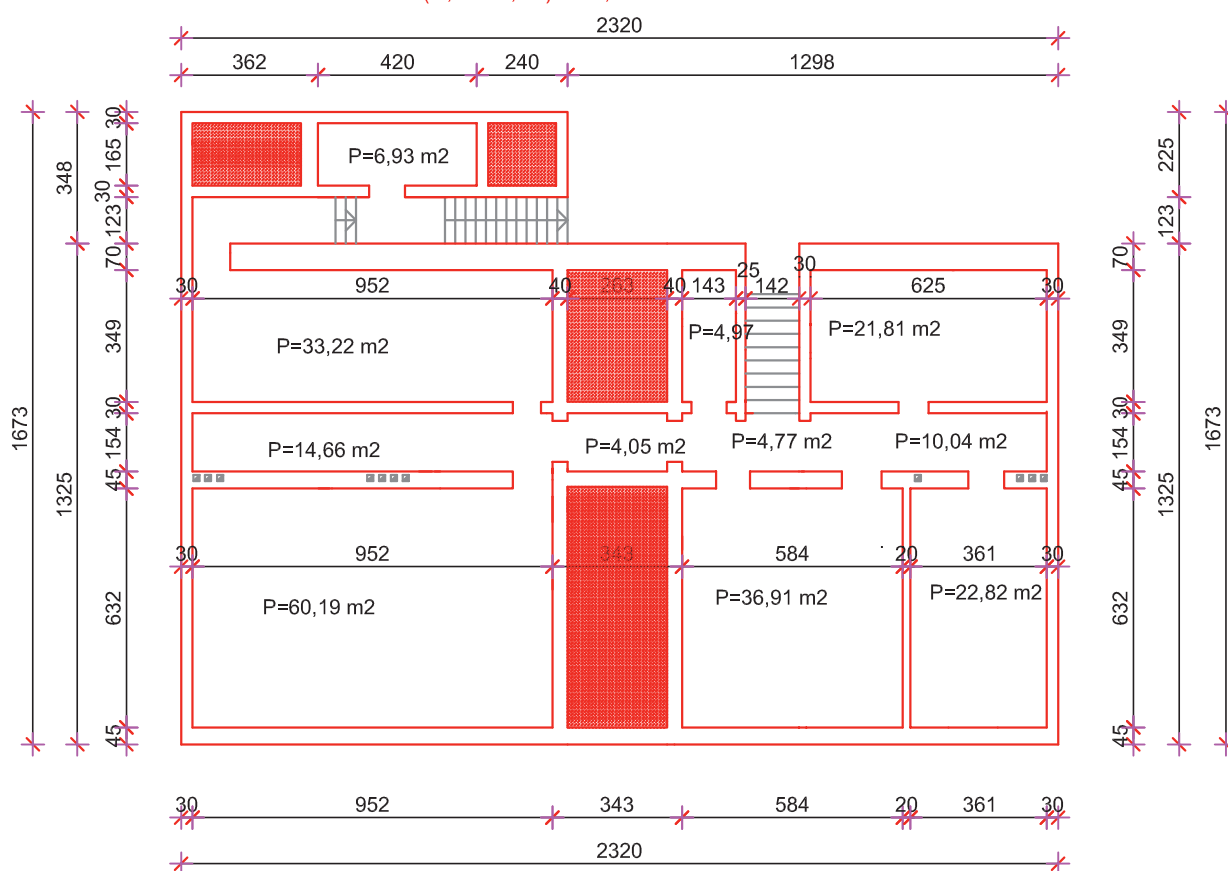


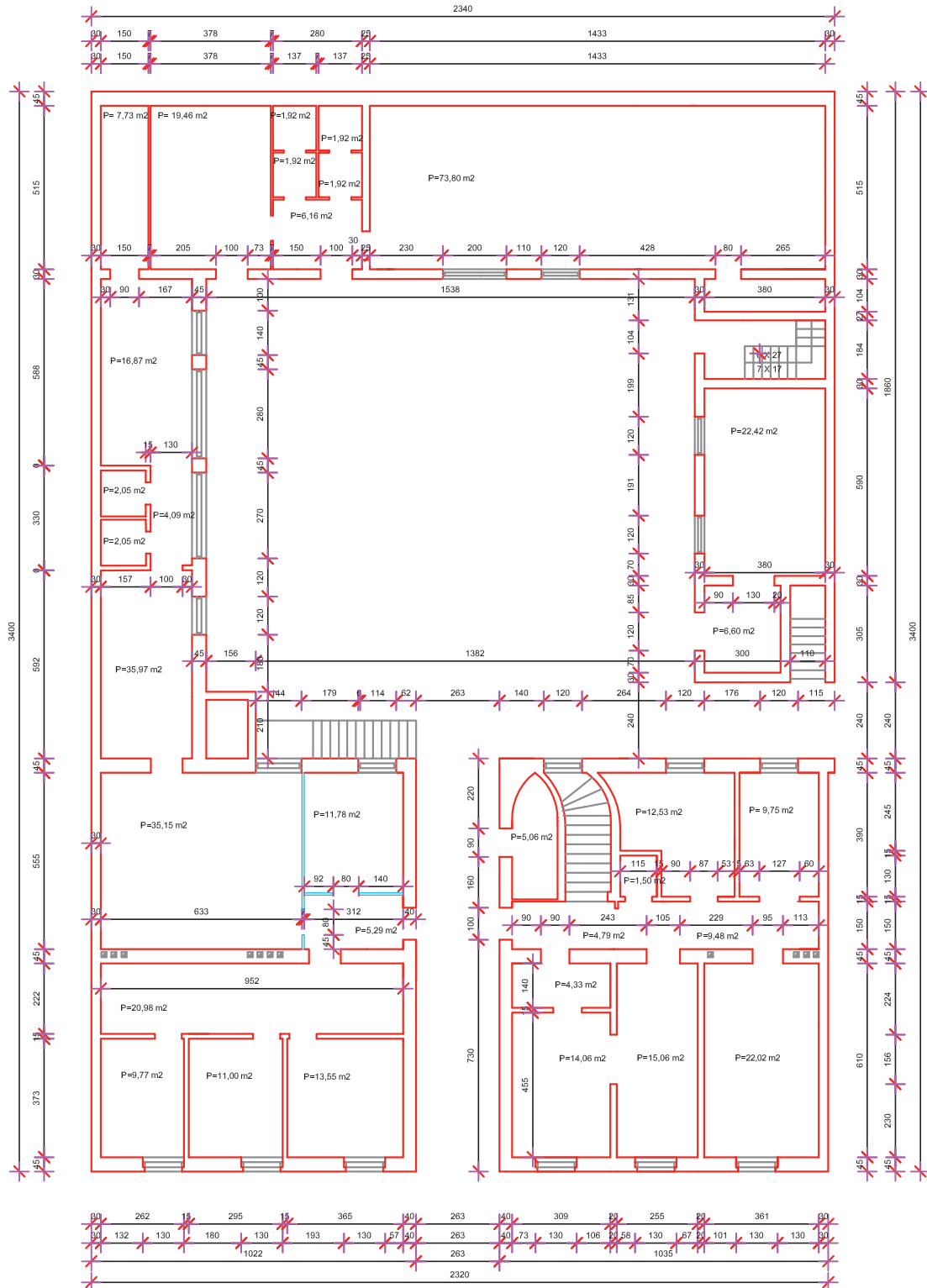
A.KOVACICA 5
TLOCRT PODRUM

Svijetla visina prostorija = 2,86 ; 2,72 m
(2,86 + 2,72):2 = 2,79 m2



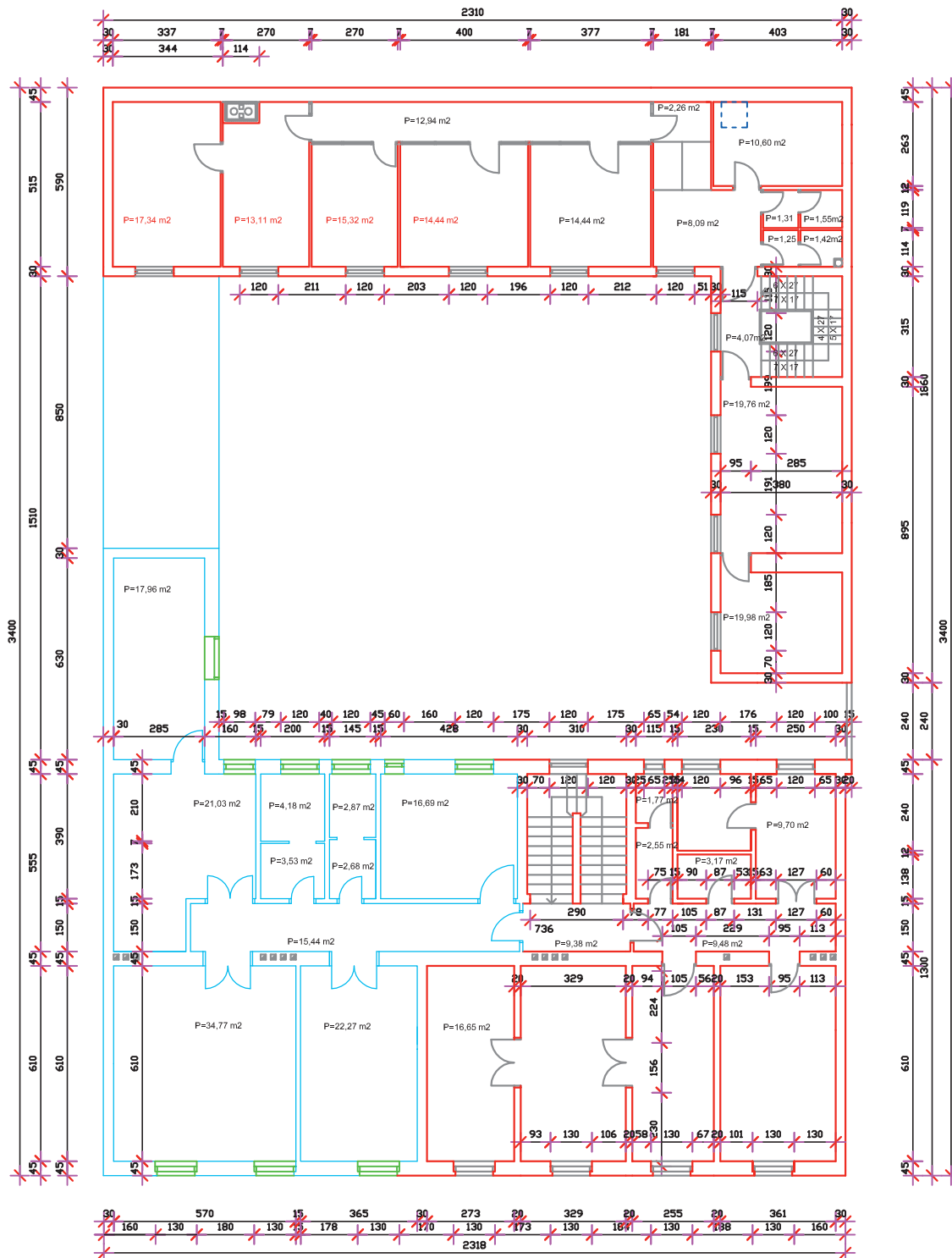
A.KOVACICA 5 TLOCRT PRIZEMLJE

SVIJETLA VISINA PROSTORA = 3,78 m; 3,59 m
(3,78 + 3,59) : 2 = 3,69 m

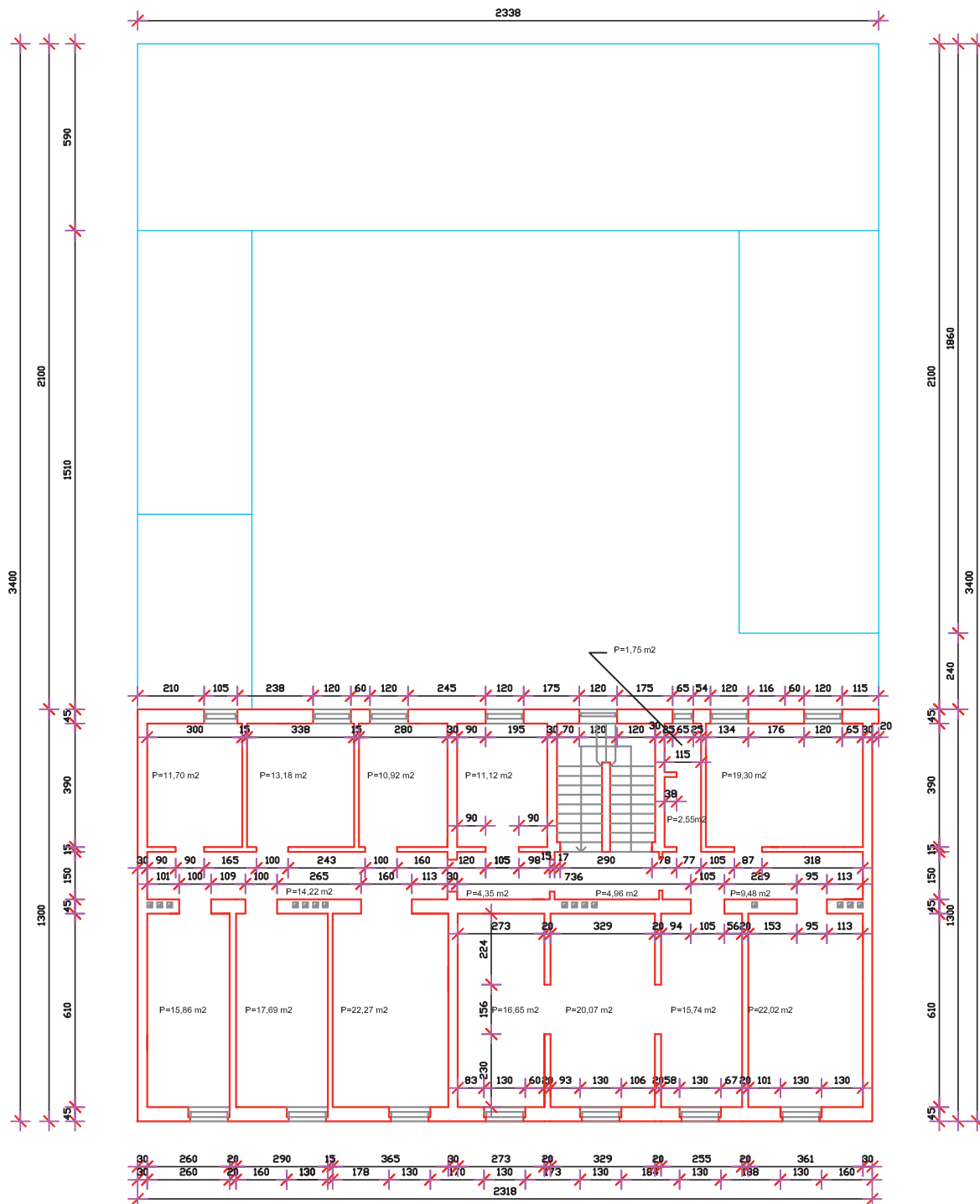


A. KOVAČIĆA 5
TLOCRT I. KATA

SVIJETLA VISINA PROSTORIJA = 3,43 m



A.KOVACICA 5.
II. KAT
M 1 : 200



POVRŠINA POSLOVNOG PROSTORA = 31,81 m²

